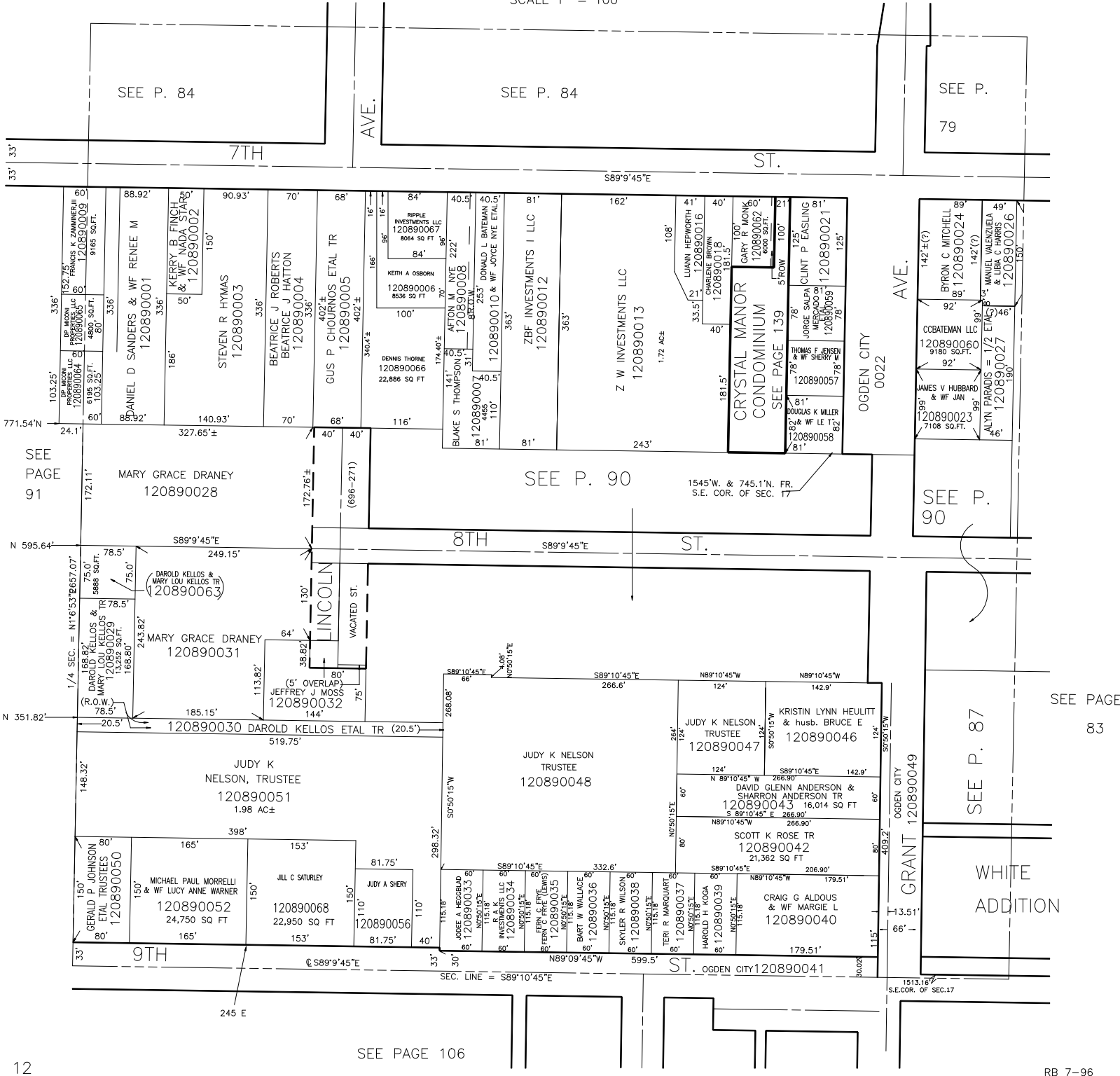


THE S.W. 1/4 OF THE S.E. 1/4 OF SECTION 17, T.6N.,R.1W., S.L.B.&M.

IN OGDEN CITY
SCALE 1" = 100'

TAXING UNIT: 25



SEE P. 84

SEE P. 84

SEE P.
79

33'

7TH

AVE.

ST.

S89°9'45"E

SEE PAGE
91

N 595.64'

N 351.82'

33'

SEE PAGE 106

SEE P. 90

8TH

ST.

JUDY K NELSON
TRUSTEE
120890048

SEE P.
90

ST. OGDEN CITY

GRANT 120890049

SEE P. 87

WHITE
ADDITION

SEE PAGE
83